

# Tripod™ Lacer Wrist Support



The **Tripod** Wrist Lacer provides your patients with the maximum immobilization in an off-the-shelf wrist support. In addition to flexion-extension control, the **Tripod** Wrist Lacer resists radial-ulnar deviation.

## Immobilization

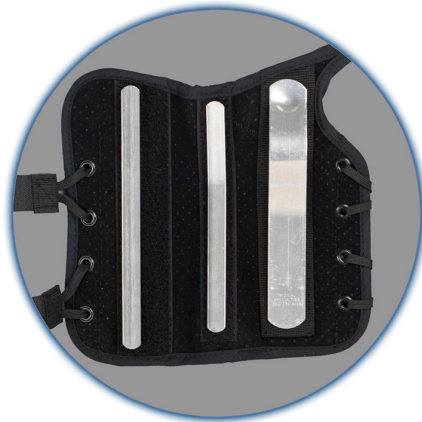
Ulnar, palmar and dorsal aluminum stays work in concert to restrict radial-ulnar deviation and minimize flexion-extension of the wrist. All stays are malleable and may be adjusted to provide a custom fit. Ulnar and palmar stays may be removed if desired for a progressive treatment protocol.

## Ease of Application

Dual lace closure allows for easy one-handed application and adjustability.

## Optimum Comfort

The polymer felt liner and perforated suede allow moisture to evaporate away from the skin and enhance patient compliance. The adjustable thumb strap permits unrestricted motion of the fingers and thumb.



## Indications:

- Post fracture care
- Post operative care
- Carpal tunnel syndrome
- Wrist sprains or strains

Suggested HCPCS: L3908

Size	8" Left	8" Right	Wrist Circumference
X-Small	223301	223311	4 <sup>3</sup> / <sub>4</sub> " - 5 <sup>1</sup> / <sub>2</sub> "
Small	223302	223312	5 <sup>1</sup> / <sub>2</sub> " - 6 <sup>1</sup> / <sub>4</sub> "
Medium	223304	223314	6 <sup>1</sup> / <sub>4</sub> " - 7"
Large	223305	223315	7" - 7 <sup>3</sup> / <sub>4</sub> "
X-Large	223306	223316	7 <sup>3</sup> / <sub>4</sub> " - 8 <sup>1</sup> / <sub>2</sub> "
Universal	223340	223341	5 <sup>1</sup> / <sub>2</sub> " - 8 <sup>1</sup> / <sub>2</sub> "

